

 **ANCHOR**

by **Panasonic**

MODULAR BOXES

**CONCEALED GI
& PLASTIC BOXES
SURFACE PLASTIC
BOXES**



ROMA
Classic



ROMA
PLUS



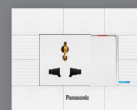
ROMA
URBAN



WOODS



Rider



Panasonic
VISION



Panasonic
EUROPA



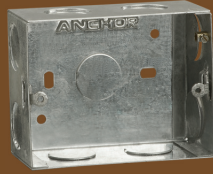
PENTA
MODULAR

PRICELIST: JULY 2022

Concealed Galvanised Metal Boxes

METAL BOXES

- GI Boxes with 120 GSM Zinc Coating
- Manufactured from GI Sheet having 250 Hrs protection against Red rust
- Good quality threads
- Earthing terminal to avoid shock



Concealed & Surface Plastic Boxes

PLASTIC BOXES

- High quality boxes made with High impact plastics
- Metal thread inserts



Code	Description	Dimensions (L x W x D) in cm	HSN	MRP ₹ Per N (incl. of all taxes)	Standard Packing Quantity
NOA CONCEALED GI SHEET METAL BOXES NEW ARRIVAL					
35451	1 or 2 Module	7.9 x 7.5 x 4.6	10N	62.00	10N
35453	3 Module	7.9 x 9.9 x 4.6	10N	88.00	10N
35455	4 Module	7.9 x 13.5 x 5.2	10N	105.00	10N
35459	6 Module	7.9 x 20.7 x 5.2	10N	130.00	10N
35461	8 or 9 Module Horizontal	7.9 x 23.0 x 5.2	5N	167.00	5N

CONCEALED GI SHEET METAL BOXES					
21780	1 or 2 Module	7.9 x 7.5 x 4.6	85389000	67.00	10N
21452	3 Module	7.9 x 9.9 x 4.6	85389000	94.00	10N
21791	4 Module	7.9 x 13.5 x 5.2	85389000	113.00	10N
21463	6 Module	7.9 x 20.7 x 5.2	85389000	139.00	10N
30453	8 or 9 Module Horizontal	7.9 x 23.0 x 5.2	85389000	179.00	5N
21474	8 Module Rectangular	13.2 x 13.5 x 5.6	85389000	179.00	5N
21485	12 Module	13.2 x 20.7 x 5.6	85389000	221.00	5N
21736	16 Module	14.2 x 23.0 x 5.6	85389000	252.00	5N
21758	18 Module	20.7 x 20.7 x 6.0	85389000	281.00	5N

CONCEALED GI SHEET METAL BOXES - 1.2 mm Thickness					
35640	1 or 2 Module	7.9 x 7.5 x 4.6	85389000	80.00	10N
35650	3 Module	7.9 x 9.9 x 4.6	85389000	118.00	10N
35661	4 Module	7.9 x 13.5 x 5.2	85389000	141.00	10N
35672	6 Module	7.9 x 20.7 x 5.2	85389000	170.00	10N
35683	8 or 9 Module Horizontal	7.9 x 23.0 x 5.2	85389000	225.00	5N
35394	8 Module Rectangular	13.2 x 13.5 x 5.6	85389000	225.00	5N
35708	12 Module	13.2 x 20.7 x 5.6	85389000	276.00	5N
35719	16 Module	14.2 x 23.0 x 5.6	85389000	312.00	5N
35720	18 Module	20.7 x 20.7 x 6.0	85389000	347.00	5N

* Limited time, as per site condition

Code	Description	Dimensions (L x W x D) in cm	HSN	MRP ₹ Per N (incl. of all taxes)	Standard Packing Quantity
STAINLESS STEEL METAL BOXES					
36001	1 or 2 Module	7.9 x 7.5 x 4.6	85389000	343.00	10N
36002	3 Module	7.9 x 9.9 x 4.6	85389000	409.00	10N
36003	4 Module	7.9 x 13.5 x 5.2	85389000	535.00	10N
36004	6 Module	7.9 x 20.7 x 5.2	85389000	640.00	10N
36006	8 or 9 Module Horizontal	7.9 x 23.0 x 5.2	85389000	762.00	5N
36005	8 Module Rectangular	13.2 x 13.5 x 5.6	85389000	762.00	5N
36007	12 Module	13.2 x 20.7 x 5.6	85389000	942.00	5N
36008	16 Module	14.2 x 23.0 x 5.6	85389000	1131.00	5N
36009	18 Module	20.7 x 20.7 x 6.0	85389000	1377.00	5N

SURFACE PLASTIC BOXES					
21281	1 or 2 Module	8.5 x 8.5 x 5.0	85389000	64.00	10N
20449	3 Module	8.5 x 11.5 x 5.0	85389000	80.00	10N
21292	4 Module	8.5 x 14.5 x 5.0	85389000	88.00	10N
30511	6 Module	8.5 x 21.9 x 5.0	85389000	113.00	10N
30704	8 or 9 Module Horizontal	8.5 x 24.8 x 5.0	85389000	158.00	5N
20450	8 Module Rectangular	15.2 x 14.5 x 5.0	85389000	158.00	5N
20347	12 Module	15.3 x 21.4 x 5.0	85389000	200.00	5N
34567*	16 Module	15.3 x 25.9 x 5.0	85389000	214.00	5N
34568	16 Module	23.0 x 15.3 x 5.0	85389000	234.00	5N
34569**	18 Module	21.4 x 20.5 x 5.0	85389000	264.00	5N

* Not suitable for Woods - (Matrix, Stella Plate), Vision & Roma Plates

CONCEALED PLASTIC BOXES					
21237	1 or 2 Module	7.8 x 7.8 x 4.5	85389000	48.00	10N
21306	3 Module	7.5 x 10.3 x 5.2	85389000	60.00	10N
21248	4 Module	7.6 x 13.6 x 4.6	85389000	78.00	10N
21259	6 Module	7.6 x 20.5 x 5.0	85389000	112.00	10N
30475	8 or 9 Module Horizontal	7.8 x 22.9 x 5.0	85389000	147.00	5N
21260	8 Module Rectangular	13.5 x 13.3 x 5.1	85389000	147.00	5N
21270	12 Module	13.5 x 20.6 x 5.1	85389000	182.00	5N
21408	18 Module	20.4 x 20.7 x 5.1	85389000	233.00	5N

* S.S. box also available on request

TERMS AND CONDITIONS

1) Prices are in INR (₹). 2) All prices are subject to the general terms and conditions of our business. 3) Prices are subject to change without prior notice. 4) This price list supersedes all our previous price lists. 5) If any dispute should arise it will be subject to Thane jurisdiction. 6) Company reserves the right to issue amendments which may arise due to any errors in the price list. 7) Colour in images are for reference purpose only, please see product for actual colour.

Due to continuous improvements in product design and development and manufacturing methods, the product may differ in some aspects from the details provided herein.

PANASONIC LIFE SOLUTIONS INDIA PVT. LTD.

Corporate & Head Office: 3rd Floor, B Wing, I-Think Techno Campus, Pokharan Road No.2, Thane (W), Thane - 400 607, Maharashtra.
Tel. 022 4222 8888 | Fax. 022 4222 8884, Customer Care no.: 022-41304130 | WhatsApp: 9136028606
Email: wecare@in.panasonic.com | www.lsin.panasonic.com

Registered Office: 12th Floor, Ambience Tower, Ambience Island, NH-48, Gurugram - 122 002, Haryana.

www.facebook.com/AnchorPanasonic | www.twitter.com/AnchorPanasonic | <https://in.linkedin.com/company/anchor-panasonic> | www.instagram.com/anchorpanasonic/

Distributor / Dealer Stamp