

Life Is On

Schneider
Electric

 PriceList

Power Monitoring Solutions Metering Products

With effect from July 15th, 2025



se.com/in

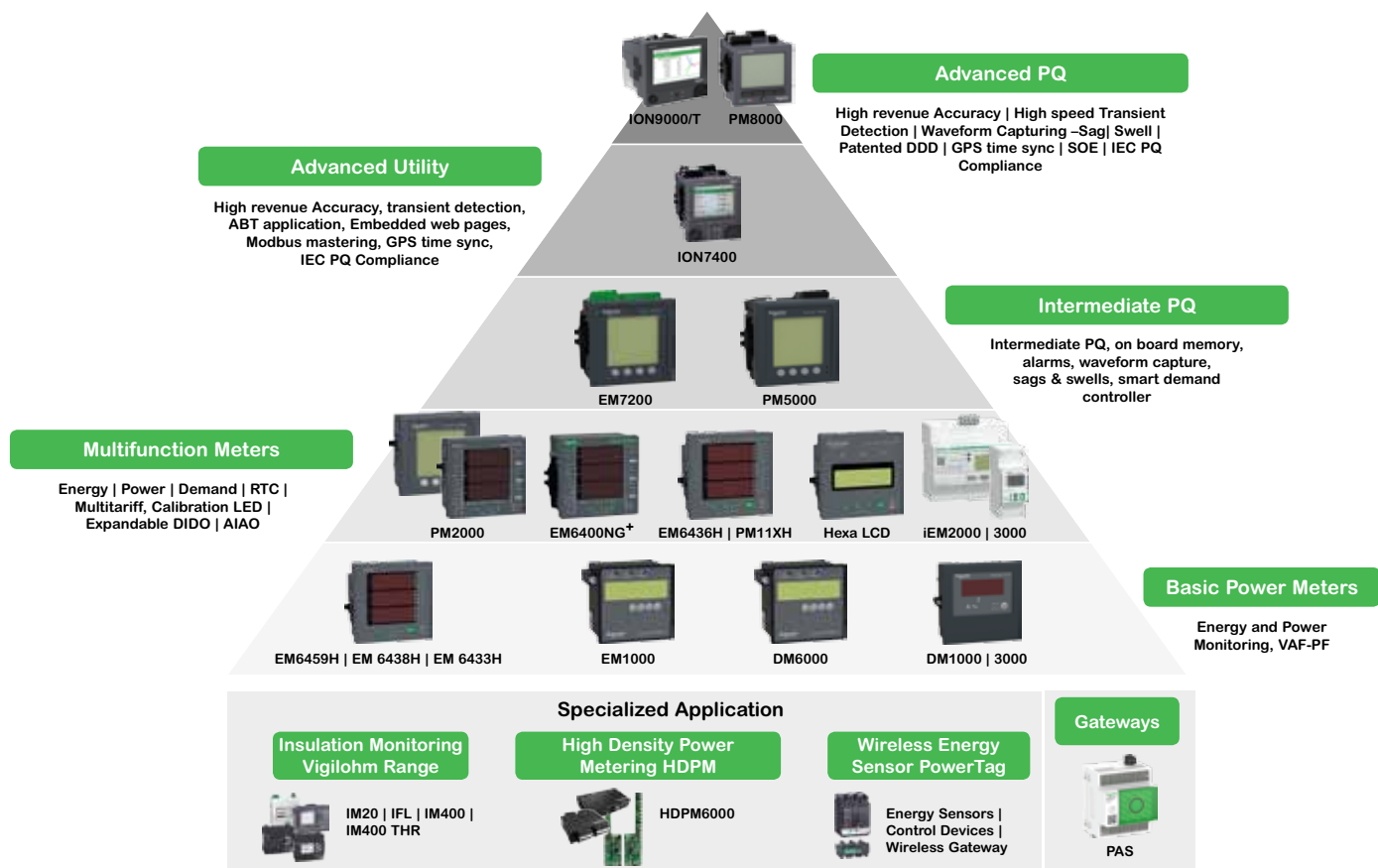
Authorised Dealer & Stockist: MAKCON INDUSTRIES
EMAIL : contact@makconindustries.com
MOB: 7703033555

1. Tailored Offers for Specific Applications and Segments	6
1.1 HDPM	6
1.2 Insulation Monitoring Devices	6
2. High Accuracy, Specialized Solutions - for MV/LV Distribution.....	8
2.1 PowerLogic™ ION9000T	8
2.2 PowerLogic™ ION9000	8
2.3 PowerLogic™ ION7400	9
2.4 PowerLogic™ PM8000 Series.....	9
3. High Accuracy, Compact, Power Meters - for HV/MV/LV Distribution	11
3.1 PowerLogic™ PM5000.....	11
3.2 Smart Demand Controller - EM7200	12
3.3 EasyLogic™ PM2000 Series.....	13
4. India's Most Sold Multifunction Meters	15
4.1 EasyLogic™ EM6400NG+	15
5. India's Most Trusted, Reliable and Accurate Load Managers	17
5.1 Hexa Series EM64XXH and PM1130H Meters	17
5.2 Hexa Series LCD Range.....	18
5.3 Hexa Series PM112XH Series	19
5.4 Hexa Series PM11XXH Series	19
6. PowerTag - World's Smallest Energy Sensor	21
6.1 PowerTag for MCB	21
6.2 PowerTag for MCCB.....	21
6.3 Smartlink.....	22
6.4 Communication Auxiliaries.....	22
7. DIN Rail Mount Meters - Accurate, Flexible Power Meters	24
7.1 PowerLogic™ PM3200 Series.....	24
7.2 PowerLogic™ iEM2000 and iEM3000 Series	25
8. Ethernet Communication Gateways.....	28
8.1 Ethernet Communication Gateway Server / Converters	28
9. LCD Display Energy Meters & VAF+PF Meters.....	29
9.1 EM1000 / EM1200 Series	29
9.2 DM 6100 Series.....	29
10. CE compliance - Volt/Amp/ frequency meter.....	30
10.1 EasyLogic™ DM3000 / DM1000	30
11. Just the Basics - Voltage / Ampere / Frequency Meters	30
11.1 Just the Basics - Voltage / Ampere / Frequency Meters	30

Authorised Dealer & Stockist: MAKCON INDUSTRIES
EMAIL : contact@makconindustries.com
MOB: 7703033555



Discover Our Power Monitoring Solutions



W.E.F. July 15th, 2025



Accurate and adaptable branch circuit metering

PowerLogic™ HDPM6000 series for panelboards



PowerLogic™ HDPM6000 high-density multi-circuit power meters enable customized panelboard solutions for cost and network management in critical facilities.

With a modular platform approach to minimize integration costs, start-up time and operational expenses, HDPM6000 meters provide insight, accuracy and results. The HDPM6000 head unit provides voltage waveform capture, data logging and full Ethernet communication. HDPM6000S, with strip technology for branch circuit monitoring and click-in CT design, is perfect for new installations. The modular HDPM6000R is highly adaptable and can be retrofitted into any switchgear, distribution panel or cabinet with a high density of circuits.

Applications

- **Energy cost allocation**
 - » Accurately correlate and/or bill for circuit- and process-specific costs, keep users accountable for energy use
- **Energy monitoring**
 - » Gather and analyze consumption data to identify patterns, target energy efficiency measures and verify results, identify waste and opportunities to reduce energy
- **Power quality monitoring per circuit (THD + waveform capture)**
 - » Analyze and interpret power quality data into useful information, improve system-wide performance, help determine causes of equipment malfunction
- **Energy billing**
 - » View current and historic circuit-focused energy bills, compare use across circuits, discover trends over time
- **Compliance**
 - » ASHRAE 90.1-2019, Seattle energy code, Title 24, etc.*

Asset management

- **Monitor up to 192 circuits**
- **Identify increased harmonics in the rack servers to detect a potential failure (THD/circuit, waveform capture/circuit)**

• *Contact your Schneider Electric sales representative for confirmation on compliance to other local standards not mentioned here*

Robust communications

- Support for MODBUS, SNMP and BACnet TCP IP

Cybersecurity

- Helps minimize vulnerabilities to critical power assets and systems and reinforce security strategy

Data logging

- On-board memory for data logging
- Meet the needs of robust code compliance applications

Modular and scalable

- Adapts to expanding electrical networks
- Scalable, future-proof capabilities
- Simplified installation for reduced wiring issues

Panelboard solution

- Embedded web page for configuration and monitoring
- Touch screen HMI (optional) for data display
- EcoStruxure™ Power integration

1. Tailored Offers for Specific Applications and Segments



- > HDPM A/B/C variants
- > Split or solid core CTs
- > 24 / 36 / 42 / 48 / 72 / 84 channels configuration

1.1 HDPM

*Price On Request

The PowerLogic™ HDPM6000 - New standard for Power Quality Meters as both a standalone three-phase PQM and the foundation for an entire suite of devices: HDPM6000R, HDPM6000S, and HDPM6000B

- > Provides power quality metrics down to the branch circuit allowing users to effectively monitor circuit loads, manage power consumption, allocate energy costs and maximize uptime across their facilities.
- > Makes energy and power quality data immediately actionable and relevant to operational and sustainability goals.
- > Modular platform approach provides scalability and minimizes integration costs, start up time and operational expenses.
- > Asset management
 - Identify increased harmonics in the rack servers to detect a potential disruption
 - Total Harmonics Distortion
 - Waveform capture
- > Display and web page visualization
 - Optional touchscreen display accesses meter data
 - User-friendly web interface allows configuration of branch circuits and commissioning of meter system
- > Data logging and software monitoring
 - Data logging and on-board memory storage
 - EcoStruxure™ PME and Power Operation integration
- > Busway solution
 - Modular, distributed architecture meets data center requirements in an all-in-one solution

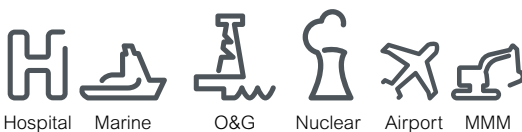


1.2 Insulation Monitoring Devices

*Price On Request

Required as part of an IT earthing system, an Insulation Monitoring Device (IMD) detects the initial fault so you can make repairs before a second fault occurs, which could trigger protective devices and halt operations.

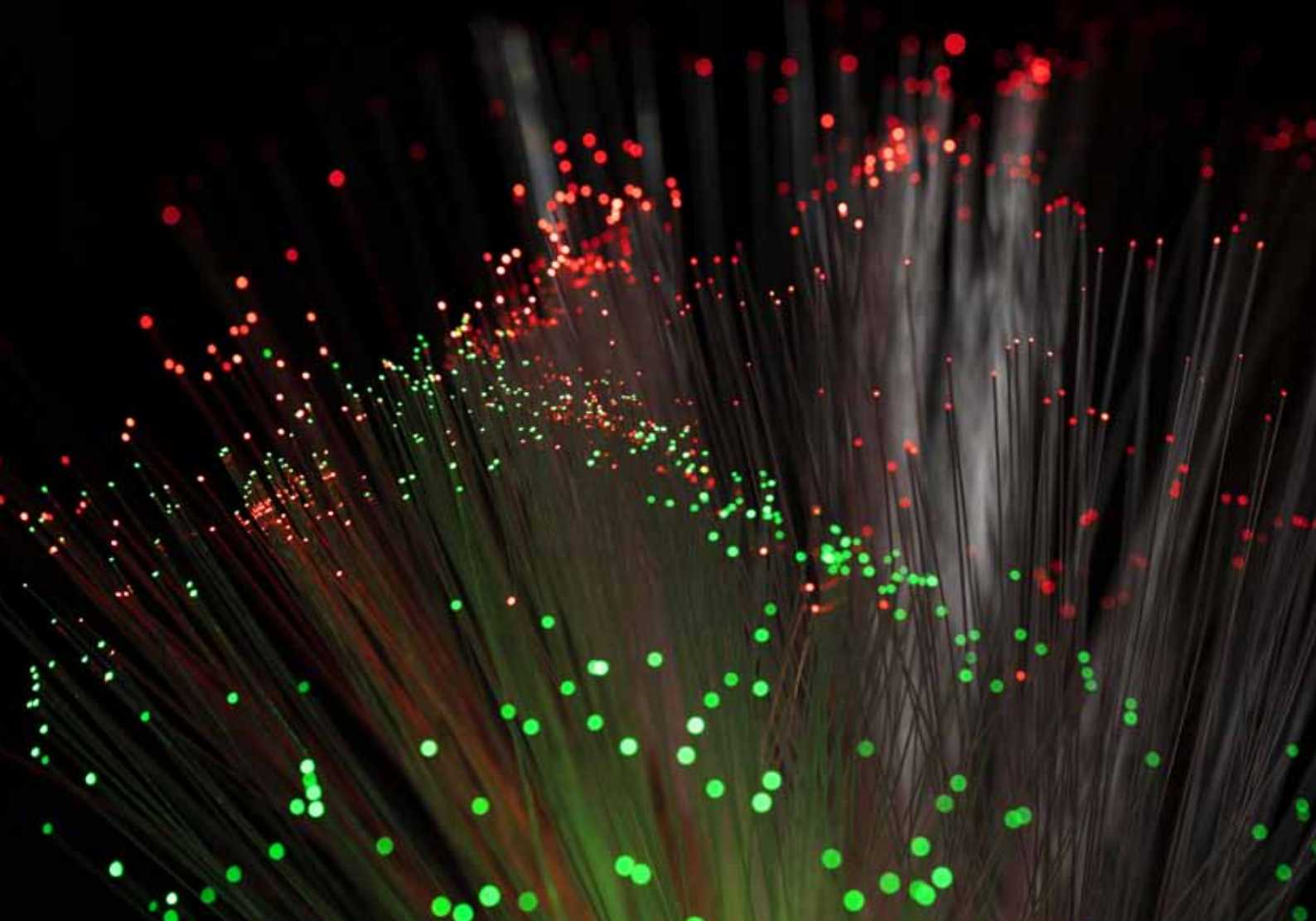
- > Can be used in 3 levels of insulation monitoring.
 - Level 1 : fault detection and signalling, manual fault location (all IMDs)
 - Level 2 : automatic fault location
 - Level 3 : feeder measurement + communication
- > Simple operation and installation.
- > Synchronicity with modern, communicating ungrounded electrical distribution networks.
- > Compliance with international standards - IEC 60364-4-41, IEC 61010-1, IEC 61557-8, IEC 61557-9.
- > Seamless integration into complete solutions.
- > Exclusive measurement of leakage capacitance.
- > Increased property life by enabling preventive and corrective maintenance operations.
- > Stores time-stamped alarms.
- > Insulation fault remote indicator (audible & visual).
- > Electrical fault (transformer overload or circuit breaker tripping) remote indicator (audible & visual).



Please contact Customer Care Center for Stockable and Non stockable status of references.

✓ NORMAL STOCK ITEMS

W.E.F. July 15th, 2025



Introducing new range of **ION7400**
and **PM8000 Series** with Class A
compliance and Higher Sampling rate



PowerLogic™ Series

2. High Accuracy, Specialized Solutions - for MV/LV Distribution



2.1 PowerLogic™ ION9000T

*Price On Request

The PowerLogic™ ION9000T is your 24/7 power quality expert, providing information, not just data.

- > High-Speed Transient Capture (HSTC) of voltage events 100 nano seconds or longer in duration and up to 10,000 V in magnitude with high speed and disturbance waveform captures, as well as prevent statistics on each transient.
- > Modular, flexible, patented ION™ programmable technology.
- > Industry leading Class 0.1S accuracy IEC 62052-11 ed.2, ANSI C12.20 Class 0.1 (active energy).
- > Patented Disturbance Direction Detection - The meter shall be able to provide a level of confidence that a voltage disturbance occurred upstream or downstream of the meter.
- > Onboard PQ Analysis – Complying with IEC61000-4-30 class A, IEC62586-1 / IEC62586-2, and verified by third-party lab certifications.
- > Onboard pass/fail PQ characterization and assessment according to EN50160 and IEEE519.
- > Cybersecurity event logging, Syslog protocol, HTTPS, SFTP and full control of each communication port.
- > The meter support time synchronisation methods that include Precision Time Protocol, IRIG-B, GPS (RS485), NTP and software command.



2.2 PowerLogic™ ION9000

*Price On Request

ION9000 makes your power network safer, more reliable, efficient, and compliant.

- > Transient detection and capture: events 20 microseconds or longer in duration on any voltage channel with alarm, event log, and waveform capture.
- > 2 GB of standard non-volatile memory.
- > Fully compliant with IEC 61000-4-30 class A ed3 Power Quality standard according to IEC 62586-1 / -2.
- > Provides onboard power quality compliance monitoring according to EN50160 and IEEE519.
- > Can record voltage and current waveforms at 1024 samples per cycle
- > The meter is revenue class compliant to class 0.1S according to ANSI and IEC for both 5A and 1A nominal inputs.
- > Provides a graphical flexible programming capability to allow it to be adapted to nearly any application.
- > Can serve as a Modbus Master in a communication network, either through reading and logging data from other Modbus devices, or serving as a Modbus serial to Ethernet gateway.
- > Provides a level of confidence that a voltage disturbance occurred upstream or downstream of the meter.
- > Provides two color display options; one that is 96mm x 96mm with pushbutton controls and one that is 192mm x 192mm with touchscreen controls.

2. High Accuracy, Specialized Solutions - for MV/LV Distribution



Now
available in
Class A

2.3 PowerLogic™ ION7400

*Price On Request

Providing high accuracy and a wide range of features for transmission and distribution metering, the versatile PowerLogic™ ION7400 series advanced utility meter has the flexibility to change along with your needs.

- > Meets stringent IEC and ANSI measurement accuracy standards including ANSI C12.20 accuracy class 0.2, current class 2 and 10, and IEC 62053-22 Class 0.2S and is fully compliant with IEC 61557-12 PMD.
- > The meter is certified by a third-party laboratory to the power quality standards IEC 61000-4-30, Edition 3 Class 'A' and IEC 62586-2 Edition 2. The meter's low pass anti-aliasing signal filters shall meet the requirements of IEC 61000-4-7.
- > Has sampling rate of 512 Samples/cycle.
- > Has a high-visibility color graphical display that is user programmable to display up to 6 parameters per screen.
- > Provides multi-port Ethernet and serial communications with at least two Ethernet ports and one RS485 serial port.
- > Industrial communication protocols supported by the meter includes Modbus, DNP3, and IEC 61850. The meter provides enhanced cybersecurity features not limited to HTTPS in accordance with TLS 1.2.
- > Has the ability to determine the location of a voltage disturbance by identifying the direction of the disturbance relative to the meter.



Now
available in
Class A

2.4 PowerLogic™ PM8000 Series

*Price On Request

The PowerLogic™ PM8000 series meters are compact, cost-effective multifunction power meters that will help you ensure reliability and efficiency of your power-critical facility.

- > Meets stringent IEC and ANSI measurement accuracy standards including ANSI C12.20 accuracy class 0.2, current class 2 and 10, and IEC 62053-22 Class 0.2S and be fully compliant with IEC 61557-12 PMD.
- > Certified by a third-party laboratory to the power quality standards IEC 61000-4-30, Edition 3 Class 'A' and IEC 62586-2 Edition 2. The meter's low pass anti-aliasing signal filters shall meet the requirements of IEC 61000-4-7.
- > Has sampling rate of 512 Samples/cycle*.
- > Has a high-visibility color graphical display that is user programmable to display up to 6 parameters per screen.
- > Has the ability to determine the location of a voltage disturbance by identifying the direction of the disturbance relative to the meter. The disturbance direction shall be captured in the device's event log, along with a timestamp and confidence level indicating level of certainty.
- > Meter's on-board web server provides access to real-time values, power quality information, and basic meter configuration.
- > Provides set-point driven alarming capability.
- > Captures voltage and current channels for sub-cycle disturbances, as well as multi-cycle sags, swells and outages in quick succession, without dead time between recordings.



The new benchmark in competitive, precision metering

PowerLogic™ PM55/56/5700 Series

The highly capable PowerLogic™ PM5500, PM5600, and PM5700 power meters combine multiple features that are not typically found in basic range power meters: power quality capabilities, residual current monitoring, and MID conformance. This combination of features merge with industry-leading measurement accuracy to match the requirements of energy cost management applications in buildings and industry. Compliant with stringent international metering standards, these meters remove any uncertainty in billing for energy consumption and ensure a high level of performance that non-compliant devices cannot match.

Allocate energy costs, perform tenant sub-billing, pinpoint energy savings, optimize equipment efficiency and utilization, and perform a basic assessment of the power quality in your electrical network.

Residual Current Monitoring

- Proactively identify residual current to maximize electrical distribution uptime, reduce risk of faults, and improve safety

Power Quality Monitoring

- Identify power quality events to avoid downtime, prevent equipment damage

LVDC Control Power Option (24V DC)

- Continuously monitor system and log data, even during an outage or voltage instability, in addition to significant installation and material cost savings DNP3.0 Protocol
- Seamless tie-in to new or existing utility and heavy industrial applications without the need for additional gateways or protocol converters

Analog Inputs

- Monitor electrical and non-electrical parameters (e.g. temperature, flow rate, pressure etc.)

3. High Accuracy, Compact, Power Meters - for HV/MV/LV Distribution



3.1 PowerLogic™ PM5000

The PowerLogic™ PM5000 series power meters are the new benchmark in affordable, precision metering.

- > Easy to install and operate.
- > Easy for circuit breaker monitoring and control with two Relay outputs (PM5330, PM5340.)
- > Identify power quality events to avoid downtime, prevent equipment damage.
- > Load management combined with alarm and timestamping
- > High performance and accuracy - Provides Class 0.2S accuracy per IEC 62053-22 standard.
- > Residual Current Monitoring in PM5660 and PM5760
- > Voltage sag and swell detection with waveform capture in PM5650 and PM5760.
- > Individual Harmonics up-to 63rd (PM5560), 31st (PM53xx) & 15th (PM51xx) THD, TDD.
- > Onboard BACnet/IP, EtherNet/IP, and DNP3.0 protocol support
- > Demand prediction based on sliding, fixed and rolling block, thermal methods.
- > Data logging upto 16 parameters.
- > WAGES Monitoring.
- > Allocate energy costs, perform tenant sub-billing, pinpoint energy savings, optimize equipment efficiency and utilization and perform a basic assessment of the power quality in your electrical network.

Product	Description	Reference	Unit MRP [₹]
PM5760	CI 0.2S, 63rd Harmonic, 1.1 MB, 2DI/2DO, RS-485, Ethernet, Wave-Form Capture and Sag/Swell, RCM	METSEPM5760	143378
PM5660	CI 0.2S, 63rd Harmonic, 1.1 MB, 2DI/2DO, RS-485, Ethernet, RCM	METSEPM5660	119684
PM5650	CI 0.2S, 63rd Harmonic, 1.1 MB, 4DI/2DO, RS-485, Ethernet, Wave-Form Capture and Sag/Swell	METSEPM5650	125457
PM5580	CI 0.2S, 63rd Harmonic, 1.1 MB, 4DI/2DO, RS-485, Ethernet	METSEPM5580	94248
PM5570	CI 0.2S, 63rd Harmonic, 1.1 MB, 2DI/2AI/2DO, RS-485, Ethernet	METSEPM5570	92218
PM5560	CI 0.2S, 63rd Harmonic, 1.1 MB, 4DI/2-DO, RS-485, Ethernet	30003008D	91466
PM5340	CI 0.5S, 31st Harmonic, 256 kB, 2DI/2DO/2-Relay, Ethernet	30003007D	53500
PM5320	CI 0.5S, 31st Harmonic, 256 kB, 2DI/2DO, Ethernet	30003005D	49865

Please contact Customer Care Center for Stockable and Non stockable status of references.

☑ NORMAL STOCK ITEMS

W.E.F. July 15th, 2025

3. High Accuracy, Compact, Power Meters - for HV/MV/LV Distribution



3.2 Smart Demand Controller - EM7200

EasyLogic™ EM7230 / EM7280 / EM7290 is a smart demand controller for optimizing maximum demand charges in LV or MV circuits.

- > Accuracy Class 0.2, 0.5S and Class 1.0 as per IEC 62053 21/22.
- > True RMS measurement 64 samples per cycle.
- > Power quality analysis: THD % measurements and Individual harmonics up to 31st order for voltage and current, per-phase.
- > Demand management: Simultaneous display of peak, present, predicted & rising demands of all the four demand parameters (W, VA, VAR, Amps) configurable for 1 to 30 minutes interval with prediction and spare load.
- > Multi-tariff energy - 4 multi tariff registers, can be activated through RTC.
- > On board 3 Form C mechanical relays for Demand control and management.
- > PF Lock features for advanced Revenue metering.
- > On board Modbus RTU RS-485 communication port.
- > Billing: Tenant billing/utility meter cross check (where local regulations are not applicable).
- > 4 Highs' & 4 Lows' for Instantaneous and Demand parameters with Date & Time stamp.

Product	Description	Reference	Unit MRP [₹]
EM 7290	Demand Controller CI0.2 ⁽⁺¹⁾ , RS-485	30002975	74946
EM 7280	Demand Controller CI0.5S, RS-485	30002198	58464
EM 7230	Demand Controller CI1.0, RS-485	30002055	53966

Please contact Customer Care Center for Stockable and Non stockable status of references.

☒ NORMAL STOCK ITEMS

W.E.F. July 15th, 2025

3. High Accuracy, Specialized Solutions- for MV/LV Distribution



3.3 EasyLogic™ PM2000 Series

Offering all the measurement capabilities required to monitor and electrical installation in a single 96 x 96 mm unit, with LED or LCD display options.

- > Energy Standard - Class 0.5S /1.0 as per IEC 62053-22 / 21.
- > Easy to install: Mounts using two clips, no tools are required.
- > Easy to operate: Intuitive navigation with self guided menus and test LED at the front panel used for test and calibration of the meter on site or laboratory.
- > Power quality analysis: Offers THD measurements and Individual harmonics up to 15th order in PM2x20 variants and up to 31st in PM2x30 variants.
- > Load management: Simultaneous display of peak, present, predicted & rising demands of all the four demand parameters.
- > Billing: Tenant billing/utility meter cross check.
- > Password: Field configurable password for securing set up information and prevent tampering of integrated values.
- > Cyber security: Option for disabling RS-485 port through front panel keys against unauthorized access. It helps during installation and trouble shooting of communication network.
- > 12am snap shot: The values from summary page will be stored as snap shot and refreshed by next day 12am.
- > Rate counters: 2 configurable counters display values in custom specified units based on energy recorded (e.g., kgCO2 carbon emission or energy cost).

Product	Description	Reference	Unit MRP [₹]
PM2230	CI 0.5S, LCD display, 31st Harmonics, RS-485, 12 AM Snapshot, kgCO2 counters	METSEPM2230D	39369
PM2220	CI 1.0, LCD display, 15th Harmonics, RS-485, 12 AM Snapshot, kgCO2 counters	METSEPM2220D	36218
PM2130	CI 0.5S, LED display, 31st Harmonics ⁽⁺¹⁾ , RS-485	METSEPM2130D	37708
PM2K2DIDO ⁽⁺²⁾	Module with 2-Digital input and Relay outputs for PM2x30 meter	METSEPM2KDGTLIO22D	4075
PM2K1AIAO ⁽⁺²⁾	Module with 1 each Analog input and output for PM2x30 meter	METSEPM2KANLGIO11D	4832
PM2K2AIAO ⁽⁺²⁾	Module with 2-Analog inputs and outputs for PM2x30 meter	METSEPM2KANLGIO22D	5886
PM2K2DI2RO ⁽⁺²⁾	Module with 2-Digital input and Relay outputs for PM2x30 meter	METSEPM2K2DI2ROD	5726

⁽⁺¹⁾Through communication only

⁽⁺²⁾Any one IO module can be used at a time with PM2130 or PM2230 meter. The control power range with IO module shall be 72 to 304 V AC L-N or 90 to 304 V DC.

Authorised Dealer & Stockist: MAKCON INDUSTRIES
EMAIL : contact@makconindustries.com
MOB: 7703033555

Please contact Customer Care Center for Stockable and Non stockable status of references.

☒ NORMAL STOCK ITEMS

W.E.F. July 15th, 2025



Envisioning **Atmanirbhar Bharat**
by creating world-class products in
India, for India and the world



EasyLogic™ Series and PowerLogic™ Series

4. India's Most Sold Multifunction Meters



Green Premium Eco-Mark

4.1 EasyLogic™ EM6400NG+

EM6400NG+, is an enhanced version of EM6400NG and legacy EM6400 meter series with innovative features to meet the needs of energy efficient India.

- > Energy standards: Active energy Class 0.5S/ Class 0.2 as per IEC 62053-22, Active energy Class 1.0 as per IEC 62053-21. Reactive energy Class 1 as per IEC 62053-24.
- > LED display: Intuitive navigation with self-guided, three buttons, LEDs of height ~14.2 mm (0.55 in), and three lines of concurrent values.
- > Compliant to IEC 61557-12: PMD/[SD|SS]/K55/1 for Class 1 and PMD|SD|SS]/K55/0.5 for Class 0.5S and Class 0.2 (for firmware version 1.3.0 and higher).
- > Power quality analysis: The EM6400NG+ offers THD % measurements and Individual harmonics up to 15th order for voltage and current parameters, per-phase basis.
- > Load management: Peak demands of all the four demand parameters (W, VA, VAR, Amps) with date and time stamp.
- > Communication – Pulse output, RS485.
- > Cybersecurity: Option for disabling RS-485 port through front panel keys against unauthorized access. This feature can also be used for toggling between the RTU devices in case of limited availability of nodes in software system.
- > Suppression current: To disregard induced or negligible current flowing in the circuit, minimum value of current detection can be settable from 5 to 99 mA, default is 5 mA.
- > Green premium: EOL, REACH, PEP, RoHS compliance.

Product	Description	Reference		Unit MRP [₹]
EM6400NG+	CI 0.2, LED display, THD, 15th Harmonics, RS-485	METSEEM6400NGRSL2		36461
EM6400NG+	CI 0.5S, LED display, THD, 15th Harmonics, RS-485	METSEEM6400NGRSL5		25340
EM6400NG+	CI 1.0, LED display, THD, 15th Harmonics, RS-485	METSEEM6400NGRSL1	☑	20292
EM6400NG+	CI 0.5S, LED display, THD, 15th Harmonics, POP	METSEEM6400NGPOCL5		17609
EM6400NG+	CI 1.0, LED display, THD, 15th Harmonics, POP	METSEEM6400NGPOCL1	☑	15685

* Conzerv is now EasyLogic™

Please contact Customer Care Center for Stockable and Non stockable status of references.

☑ NORMAL STOCK ITEMS

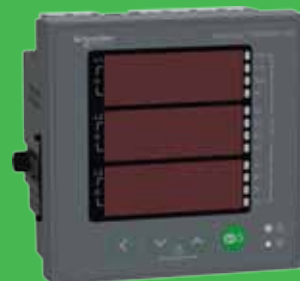
W.E.F. July 15th, 2025



Introducing new range of **Hexa Series**

EasyLogic™ PM11XXH Series

- Energy Import and Export
- Conformal coating
- Digital Input Relay Output
- Accuracy Class : Class 1.0 & Class 0.5S for Active Energy



EasyLogic™ Series

5. India's Most Trusted, Reliable and Accurate Load Managers



5.1 Hexa Series EM64XXH and PM1130H Meters

Ideal replacement for multiple analog meters for stand-alone metering in custom panels, switch boards, switch-gear, genset panels, motor control centres, power factor improvement panels, and OEM panel board.

- > Energy standards: Active energy Class 0.5 as per IEC 62053-22, Active energy Class 1.0 as per IEC 62053-21. Reactive energy Class 1 as per IEC 62053-23.
- > Favourite page: The device enables user with the option to select parameters to be set in favourite page on in EM6436H.
- > Power and energy: measurement, display and recording of any one power and corresponding energy parameters simultaneously in EM6433H, EM6436H and EM6438H - W/Wh or VA/ VAh or VAR/ VARh.
- > Compliant to IEC 61557-12: PMD/[SD|SS]/K70/1 for Class 1 and PMD/[SD|SS]/K70/0.5 for Class 0.5S.
- > Analog load bar in LED display type: The colour-coded analog load bar at the front side indicates the percentage of load through 12 LED's with the option to select full scale based on connected load.
- > Protective cover: Tamper-proof terminal screws do not detach from housing.
- > Password: Field configurable password for securing set up information and prevents tampering of integrated values.
- > Cyber security: Option for disabling RS-485 port through front panel keys against unauthorized access.

Product	Description	Reference		Unit MRP [₹]
PM1130H	CI 0.5, LED display, Demand, THD, RS-485, 1 Relay, Dual Source P&E	METSEPM1130HCL05RD		22436
EM6438H	CI 0.5, LED display, RS-485, Dual Source P&E	METSEEM6438HCL05RS		11020
EM6438H	CI 1.0, LED display, RS-485, Dual Source P&E	METSEEM6438HCL10RS	☑	10230
EM6436H	CI 0.5, LED display, RS-485, MFM	METSEEM6436HCL05RS		14434
EM6436H	CI 1.0, LED display, RS-485, MFM	METSEEM6436HCL10RS	☑	12467
EM6436H	CI 1.0, LED display, No Communication, MFM	METSEEM6436HCL10NC		10412
EM6433H	CI 0.5, LED display, RS-485, A + P & E	METSEEM6433HCL05RS		10219
EM6433H	CI 1.0, LED display, RS-485, A + P & E	METSEEM6433HCL10RS	☑	9626
EM6459H	CI 0.5, LED display, RS-485, VAF + PF	METSEEM6459HCL05RS		10856
EM6459H	CI 1.0, LED display, RS-485, VAF + PF	METSEEM6459HCL10RS	☑	10186
EM6459H	CI 1.0, LED display, No Communication, VAF + PF	METSEEM6459HCL10NC		7956

Please contact Customer Care Center for Stockable and Non stockable status of references.

☑ NORMAL STOCK ITEMS

W.E.F. July 15th, 2025

5. India's Most Trusted, Reliable and Accurate Load Managers



5.2 Hexa Series LCD Range

Offering all the measurement capabilities required to monitor the electrical installation in 132 * 32 pixels LCD display.

- > Energy standards: Active energy Class 0.5 as per IEC 62053-22, Active energy Class 1.0 as per IEC 62053-21. Reactive energy Class 2 as per IEC 62053-23.
- > LCD display: Elegant single row, bright back lit graphical LCD display 132 * 32 pixels, Fast in-line view, three parameters name and value at one glance.
- > Power and energy: measurement, display and recording of three power and corresponding energy parameters simultaneously in PM1225H - W/Wh, VA/ VAh and VAR/ VARh.
- > Communication : RS-485 serial channel connection Industry standard Modbus RTU protocol.
- > IP degree of protection: IP 51 front side, IP 30-meter body, tested as per IEC 60529 - upgrade to IP65 front side with Optional accessory kit METSEIP65OP96X96FF.
- > Password: Field configurable password for securing set up information and prevents tampering of integrated values.
- > Smart line indicators in LCD display meter: Helps check the presence of input supply voltage (healthy phase).
- > Suppression current: To disregard the measurement of induced and panel auxiliary load current in the circuit (settable from 5 to 99 mA).

Product	Description	Reference	Unit MRP [₹]
PM1230H	CI 0.5, LCD display, Demand, THD, RS-485, Dual Source P&E	METSEPM1230HCL5	20690
PM1225H	CI 0.5, LCD display, Restricted MFM, RS-485	METSEPM1225HCL5	28723
PM1225H	CI 1.0, LCD display, Restricted MFM, RS-485	METSEPM1225HCL1	22670
EM1220H	CI 0.5, LCD display, Load Manager, RS-485	METSEEM1220HCL5	15257
EM1220H	CI 1.0, LCD display, Load Manager, RS-485	METSEEM1220HCL1	13292

Authorised Dealer & Stockist: MAKCON INDUSTRIES
EMAIL : contact@makconindustries.com
MOB: 7703033555

Please contact Customer Care Center for Stockable and Non stockable status of references.

☒ NORMAL STOCK ITEMS

W.E.F. July 15th, 2025

5. India's Most Trusted, Reliable and Accurate Multifunction Meters



5.3 Hexa Series PM112XH Series

Assured quality that you can trust to meet your needs throughout its lifecycle.

- > Energy standards: Active energy Class 0.5 as per IEC 62053-22, Active energy Class 1.0 as per IEC 62053-21. Reactive energy Class 2 as per IEC 62053-23.
- > LED display: Intuitive navigation with self-guided, four buttons, 8 segment alphanumeric LEDs of height ~14.2 mm (0.55 in), and three lines of concurrent values with Kilo & Mega value indicators.
- > Power and energy: measurement, display and recording of three power and corresponding energy parameters simultaneously in PM1125H - W/Wh, VA/ VAh and VAR/ VARh.
- > Communication: RS-485 serial channel connection Industry standard Modbus RTU protocol.
- > PM1120H, measurement and display of any one power parameter at a time - configurable through set-up/ communication. Energy measurement depends on type of power parameter selected during set up (W/Wh or VA/VAh or VAR/VARh).
- > Delivered & Received or Forward & Reverse or Import & Export energy (4 quadrant) - Accumulated or Integrated active (Real - Wh), reactive (VARh), apparent (VAh). 2 quadrant energy measurement in PM1120H.
- > Suppression current: To disregard the measurement of induced and panel auxiliary load current in the circuit (settable from 5 to 99 mA).

Product	Description	Reference	Unit MRP [₹]
PM1120H ⁽⁺¹⁾	CI 1.0, LED display, Demand, THD, RS-485, P & E	METSEPM1120HCL10RD	19760
PM1125H	CI 0.5, LED display, Demand, THD, RS-485, MFM	METSEPM1125HCL05RD	27154
PM1125H	CI 1.0, LED display, Demand, THD, RS-485, MFM	METSEPM1125HCL10RD	21713

⁽⁺¹⁾Measurement and display of any one power parameter at a time (W/Wh or VA/VAh or VAR/VARh).



5.4 Hexa Series PM11XXH Series

The EasyLogic™ PM1000H Series basic power and energy meters with the option of Conformal Coating and DIRO

- > Digital Input Relay Output (DIRO): Ensures compatibility and functionality with DIRO systems.
- > Conformal Coating: Provides protection against environmental factors, enhancing durability.
- > Energy Import and Export: Measures both energy consumption and generation for comprehensive energy management.
- > Sampling Rate: Offers detailed measurement accuracy by sampling 32 times within each cycle.
- > Harmonics: Includes analysis of up to the 15th harmonic for comprehensive power quality assessment.
- > Accuracy Classes:
 - Class 1.0 for active energy as per the test limits given in IEC 62053-21 and IEC 61557-12
 - Class 0.5S for active energy as per the test limits given in IEC 62053-22 and IEC 61557-12
 - Class 2.0 for reactive energy as per the test limits given in IEC 62053-23 and IEC 61557-12

Product	Description	Reference	Unit MRP [₹]
PM1110	PM1110H Power meter Class 0.5 RS485	METSEPM1110HCL05	13119
PM1110	PM1110H Power meter Class 1.0 RS485	METSEPM1110HCL1	12494
PM1125 CC	PM1125HC Power meter Class 0.5 RS485	METSEPM1125HCCL05	16530
PM1125 CC	PM1125HC Power meter Class 1.0 RS485	METSEPM1125HCCL1	15744
PM1140	PM1140H Power meter Class 1.0 RS485	METSEPM1140HCL1	17633
PM1140	PM1140H Power meter Class 0.5 RS485	METSEPM1140HCL5	18515

Please contact Customer Care Center for Stockable and Non stockable status of references.

☒ NORMAL STOCK ITEMS

W.E.F. July 15th, 2025



Stay on top of it
with **PowerTag**

Give your business a competitive edge with PowerTag wireless energy sensors

With PowerTag Energy, you can add innovation to any project with one simple action. Even in panels where space is at a premium, you can easily tag circuit breakers up to 630 A to help your customers reduce costs and improve efficiency. As a connected product, PowerTag Energy is a key part of ExoStruxure Power – Schneider Electric's IoT-enabled, open and interoperable architecture. And a small-but-impressive solution your customers will appreciate.



se.com/powertag

* Secure it: As part of the Acti 9 communication system, PowerTag monitors loads and identifies load imbalances and overload levels before a trip occurs. PowerTag also alerts you to voltage losses, so you save time recovering your installation in the event of load downtime. An email alert means you can take preventive action thus avoiding potential downtime. © 2020 Schneider Electric. All Rights Reserved. Life Is On Schneider Electric is a trademark and the property of Schneider Electric SE, its subsidiaries and affiliated companies. 998-20959054_GMA_630A_image63A_PanelBuilder_print.ad.indd

6. PowerTag - World's Smallest Energy Sensor



6.1 PowerTag for MCB

Monitor Your Energy

- > Real time U, V, I, P, PF.
- > Active energy metering (Class 1 EN 61557-12) partial and total.
- > Load balance overview for 3P.

Improve your Maintenance

- > Pre Alarm on overload.
- > Specific "alarms" for U, I, P.
- > Alarm on feeder voltage loss.

Product	Description	Reference	Unit MRP [₹]
PowerTag	PowerTag Energy M63 1P+W	A9MEM1520	11704
PowerTag	PowerTag Energy M63 1P+N Top	A9MEM1521	11704
PowerTag	PowerTag Energy M63 1P+N Bottom	A9MEM1522	11704
PowerTag	PowerTag Energy M63 3P	A9MEM1540	23624
PowerTag	PowerTag Energy M63 3P+N Top	A9MEM1541	23624
PowerTag	PowerTag Energy M63 3P+N Bottom	A9MEM1542	23624
PowerTag	PowerTag Energy F63 1P+N	A9MEM1560	12858
PowerTag	PowerTag Energy F63 3P+N	A9MEM1570	25748
PowerTag	PowerTag Energy F63 - 3P	A9MEM1573	24522
PowerTag	PowerTag Energy Sensor 160A - F160 - 3P/3P+N	A9MEM1580	31666
PowerTag	PowerTag Energy Sensor Rope 200A - R200 - 3P/3P+N	A9MEM1590	59331
PowerTag	PowerTag Energy Sensor Rope 600A - R600 - 3P/3P+N	A9MEM1591	61993
PowerTag	PowerTag Energy Sensor Rope 800A - R1000 - 3P/3P+N	A9MEM1592	66267
PowerTag	PowerTag Energy Sensor Rope 2000A - R2000 - 3P/3P+N	A9MEM1593	69474



6.2 PowerTag for MCCB

- > Can also be installed in existing panels, designed to enhance the monitoring of your electrical assets.
- > Simplifies the connectivity of individual breakers to a Building Management System (BMS) along with ease of installation.
- > Visualize in real-time on your Smartphone or PC.

Product	Description	Reference	Unit MRP [₹]
PowerTag	ENERGY SENSOR POWERTAG NSX - M250 3P	LV434020	40597
PowerTag	ENERGY SENSOR POWERTAG NSX - M250 3P+N	LV434021	44495
PowerTag	ENERGY SENSOR POWERTAG NSX - M630 3P	LV434022	70168
PowerTag	ENERGY SENSOR POWERTAG NSX - M630 3P+N	LV434023	76853

Please contact Customer Care Center for Stockable and Non stockable status of references.

☑ NORMAL STOCK ITEMS

W.E.F. July 15th, 2025

6. PowerTag - World's Smallest Energy Sensor (cont.)



6.3 Smartlink

- > Compliance to IEC/EN 61131-2.
- > Protection Monitoring – Device Status and alarm notifications.
- > Load Control / Switching through Contactors and Impulse Relays.
- > Energy Monitoring through pulse meters.
- > Alarm over email and analog sensors (temperature / humidity) with Smartlink Ethernet.
- > Plug & Play – Pre fabricated cables and in built web pages.
- > Rated Voltage: 24V DC.

Product	Description	Reference	Unit MRP [₹]
Smartlink	Smartlink Modbus	A9XMSB11	56232
Smartlink	PowerTag Link	A9XMWD20	36536

6.4 Communication Auxiliaries

Description	Reference	Unit MRP [₹]
Mounting Kit for Din Rail	A9XMFA04	2300
Prefabricated Cables M	A9XCAM06	8493
Locking Clips for Multiclip 80	A9XMLA02	1002
Connectors 5 Pin	A9XC2412	11699
Prefabricated Cables L	A9XCAL06	9657
Prefabricated Cables S	A9XCAS06	8409
SEMI - Prefabricated Cables U	A9XCAU06	5805

Please contact Customer Care Center for Stockable and Non stockable status of references.

☒ NORMAL STOCK ITEMS

W.E.F. July 15th, 2025



Energy metering integration made simple

Acti9 iEM2000 and iEM3000 series
Intelligent Energy Meters



7. DIN Rail Mount Meters - Accurate, Flexible Power Meters



7.1 PowerLogic™ PM3200 Series

Cost-attractive, feature-rich range of DIN rail mounted power meters that offers all the measurement capabilities required to monitor an electrical installation.

- > Energy standards: Active energy Class 0.5S as per IEC 62053-22, Active energy Class 1.0 as per IEC 62053-21. Reactive energy Class 2 as per IEC 62053-23 and IEC 61557-12.
- > Supported monitoring parameters include a full range of 3-phase voltage, current, power, energy, and demand measurements, power factor, frequency and total harmonic distortion.
- > Support four-quadrant metering at 32 samples per cycle.
- > Backlit dot-matrix LCD display, anti-glare and scratch resistant with a minimum of 128 x 96 pixels, capable of displaying four values in one screen simultaneously.
- > Onboard data logging to log energy data and alarms.
- > Supports up to 18 set-point driven alarms.
- > Multi-tariffs meter with up to 4 tariffs and can be controlled by internal real-time clock, digital input or communication.
- > Has Import and Export | Active and Reactive Energy Measurement.
- > Equipped with Anti-tamper security feature to ensure the integrity of the measurements.

Product	Description	Reference	Unit MRP [₹]
PM3255	Power meter + 2 DIDO	METSEPM3255	24997
PM3250	Power meter with RS-485 port	METSEPM3250	24341
PM3210	Power meter with pulse output	METSEPM3210	22780

Authorised Dealer & Stockist: MAKCON INDUSTRIES
EMAIL : contact@makconindustries.com
MOB: 7703033555

Please contact Customer Care Center for Stockable and Non stockable status of references.

☒ NORMAL STOCK ITEMS

W.E.F. July 15th, 2025

7. DIN Rail Mount Meters - Accurate, Flexible Power Meters



7.2 PowerLogic™ iEM2000 and iEM3000 Series

Cost-attractive, feature-rich, Acti9 energy meters are perfect for helping your customers' installations become more energy efficient.

- > Accuracy class 1.0 and 0.5S (IEC 62053-21/22:2020) for active energy metering.
- > Compliance to regulations EN50470-1/3, IEC 61557-12, IEC 62053-21/22/23: 2020, IEC 62052-31:2015, IEC 62052-11:2020.
- > Bottom-to-bottom, direct connection with ratings: 40 A (iEM2000 models), 63 A (iEM3100 models), 100 A (iEM24x5 models) and 125 A (iEM3300 models).
- > Four-quadrant metering to differentiate energy consumption.
- > Additional parameters (Voltage, Current, PF, Frequency, Power - active, reactive, apparent) to monitor network balance and overload behavior.
- > Save up to four different time slots to manage multiple tariffs (peak/off-peak, workday/weekend).
- > Use the meter as a pulse counter for another meter (WAGES monitoring).
- > kW overload alarm helps prevent utility demand charges.
- > Control tariffs via digital inputs, internal clock, or communication.
- > Antitamper sealing parts prohibit accessibility to all metering connections.
- > Well protected for normal use: IP40 on front face, IP20 inside cabinet.

Product	Description	Reference	Unit MRP [₹]
iEM2435	Power and Energy meter, CI 1, M-Bus, MID, 2 tariffs, 2 pulse outputs, 4 quadrants, LCD display	A9MEM2435	19427
iEM2455	Power and Energy meter, CI 1, RS-485, MID, 2 tariffs, 2 pulse outputs, 4 quadrants, LCD display	A9MEM2455	17988
iEM3110	Energy meter with pulse output	A9MEM3110	17669
iEM3150	Energy meter, RS-485	A9MEM3150	19301
iEM3155	Advanced multi-tariff energy meter, RS-485	A9MEM3155	20448
iEM3165	Advanced multi-tariff energy meter, BACnet MS/TP	A9MEM3165	25619
iEM3200	Basic energy meter	A9MEM3200	15885
iEM3210	Energy meter with pulse output	A9MEM3210	15898
iEM3235	Advanced multi-tariff energy meter, M-Bus	A9MEM3235	30617
iEM3250	Energy meter, RS-485	A9MEM3250	17356
iEM3255	Advanced multi-tariff energy meter, RS-485	A9MEM3255	18508
iEM3265	Advanced multi-tariff energy meter, BACnet MS/TP	A9MEM3265	26404
iEM3300	Basic energy meter	A9MEM3300	17076
iEM3310	Energy meter with pulse output	A9MEM3310	24455
iEM3350	Energy meter, RS-485	A9MEM3350	25921
iEM3355	Advanced multi-tariff energy meter, RS-485	A9MEM3355	26962
iEM3365	Advanced multi-tariff energy meter, BACnet MS/TP	A9MEM3365	30463
iEM3555	Advanced multi-tariff energy meter, RS-485	A9MEM3555	33765

Please contact Customer Care Center for Stockable and Non stockable status of references.

☑ NORMAL STOCK ITEMS

W.E.F. July 15th, 2025



IoT for an intelligent power network

EcoStruxure™ Panel Server



EcoStruxure Panel Server is the next generation of gateway, providing a seamless connection of wired or unwired smart IoT devices to your edge control software or advisor. It is a foundational enabler for Schneider Electric EcoStruxure solutions.

Electrical safety

Panel Server is an integral part of Schneider Electric's continuous thermal monitoring application, helping reduce risk of electrical fires, increase people and assets protection. Implement the thermal monitoring of your electrical panel by connecting thermal and heat sensors to your Panel Server.

Power availability

Electrical distribution monitoring and power event analysis help avoid unplanned downtime caused by electrical failure. Panel server collects real-time data and alarms, presenting information through embedded webpages, making it available to edge control software or advisor for electrical system diagnostics. Use embedded webpages for first-level monitoring or monitor from your edge control.

Optimize energy efficiency

Improve your facility's energy efficiency and reduce energy consumption with energy usage analysis and performance tracking. Panel Server collects and shares energy data to help achieve your energy conservation initiatives. It is certified as part of an energy data management system according to ISO 50001, 50002, 50006.

Cybersecurity

Guarding your electrical assets and systems against cyberattacks is vital. Panel server is an IEC 62443 compliant device and is central to the IEC 62443-3-3 SL1 certified EcoStruxure Power system. Use Cybersecurity Admin Expert to manage user accounts, define your cybersecurity policy and retrieve security logs.



EcoStruxure Panel Server gives you access to the information you need to protect, maximize and optimize your power system.



Help keep people and assets safer



Maximize power availability



Optimize energy efficiency



Improve cybersecurity

EcoStruxure™ Panel Server

IoT for an intelligent power network

All-in-one gateway

- Separates your OT network from your IT network
- Wireless data concentrator
- Modbus RS485 to Modbus TCP
- Supports multiple Ethernet connections for serving information to edge control software and cloud applications

Simple commissioning

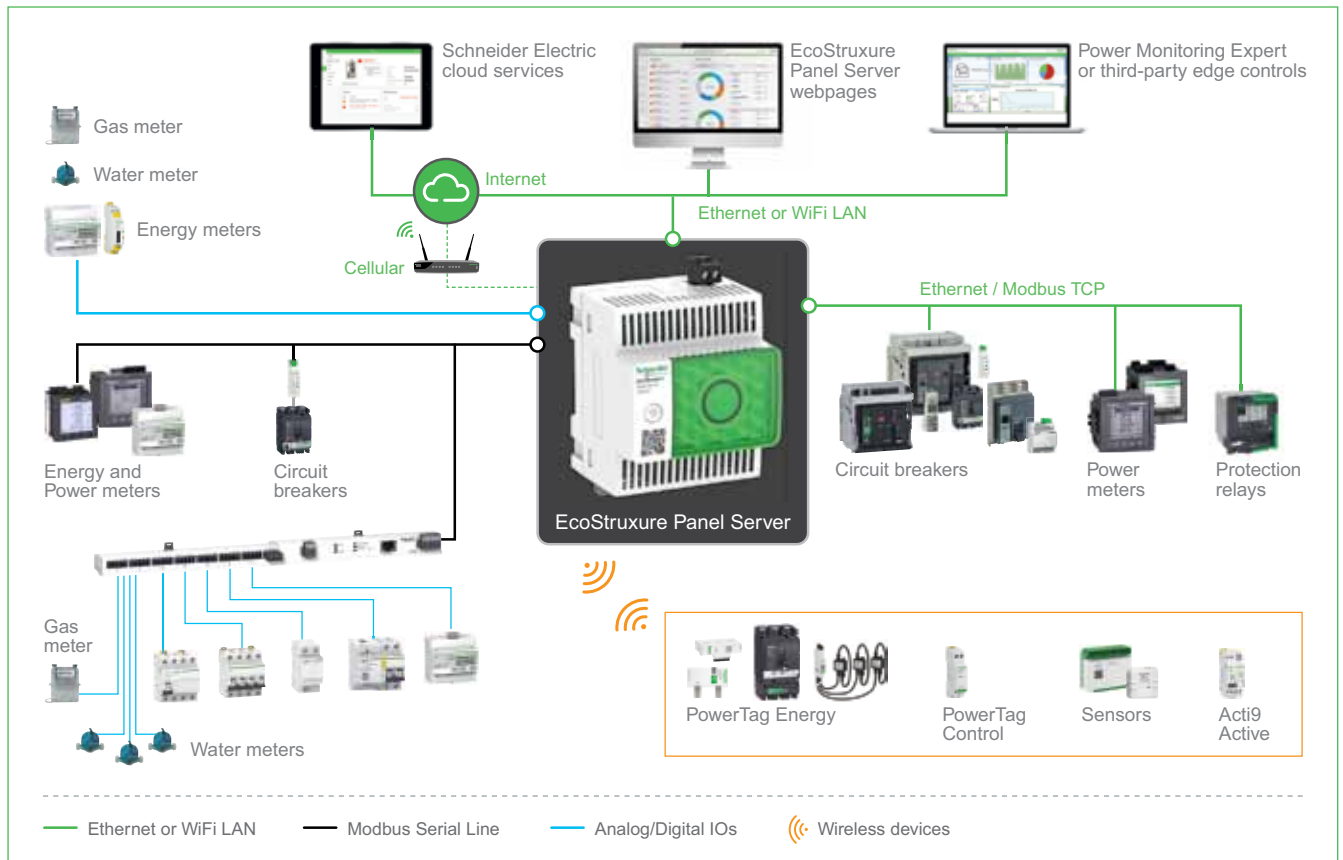
- EcoStruxure Power Commission software
- Device auto discovery
- Generation of acceptance reports to validate gateway configuration
- Commission via Bluetooth® or WiFi

Intuitive operation

- User-friendly webpages offer first-level monitoring
- Contextualized data and operational insights
- Simple alarm setup for email notification
- Standardized IEC 62974-1 compliant datalogger and energy server



Architecture overview



Please contact Customer Care Center for Stockable and Non stockable status of references.

✓ **NORMAL STOCK ITEMS**

W.E.F. July 15th, 2025

8. Ethernet Communication Gateways

8.1 Ethernet Communication Gateway Server / Converters

Panel Server



- > Retrieve data from wireless & Modbus devices.
- > Connect to edge control systems & cloud applications.
- > Plug & Play easy commissioning.
- > User friendly embedded webpages.
- > Cybersecurity at the core.

Product	Description	Reference	Unit MRP [₹]
Panel Server Universal	Panel Server Universal with 24V DC power supply	PAS600L	45697
	Panel Server Universal with 100-277 V AC/DC power supply	PAS600	
Panel Server Entry	Panel Server Entry with 110-277VACDC	PAS400	28231
Panel Server Advanced	Panel Server Advanced with 110-277VACDC	PAS800	84693
	Panel Server Advanced with 24VDC	PAS800L	

Accessories for Power Monitoring NEW

Description	Reference	Unit MRP [₹]
IP65 protection cover for PM5XXX, PM2XXX, NG+ and Hexa	METSEIP65OP96X96FD	4336

Please contact Customer Care Center for Stockable and Non stockable status of references.

☒ NORMAL STOCK ITEMS

W.E.F. July 15th, 2025

9. LCD Display Energy Meters & VAF+PF Meters



9.1 EM1000 / EM1200 Series

Power & Energy Meter for electrical load and energy monitoring

- > Accuracy Class 1.0, 0.5.
- > Elegant single row backlit LCD display.
- > Monitors: PF, W/VA/Var.
- > Three parameters, name and value at single glance with direct reading of primary values.
- > Smart line indicators to check the healthy phase of input voltage.
- > Pulse output / RS485 communication port with Modbus RTU protocol.

Product	Description	Reference		Unit MRP [₹]
EM1200	EM1200 CI0.5 RS	30002572		5969
EM1000	EM1000 CI0.5 POP	30002571		5124
EM1200	EM1200 CI1.0 RS	30002565	✓	4919
EM1000	EM1000 CI1.0 POP	30002568	✓	4053



9.2 DM 6100 Series

High durability, sleek LCD display VAF+PF meters

- > Accuracy Class 1.0, 0.5.
- > Elegant single row, backlit LCD display.
- > Monitors: V, A, F, PF.
- > Three parameters, name and value at single glance with direct reading of primary values.
- > Four smart keys for easy navigation.
- > Smart line indicators to check the healthy phase of input voltage.
- > RS485 communication port with Modbus RTU protocol.

Product	Description	Reference		Unit MRP [₹]
DM6300	DM6300 CI0.5 RS	30002570		4942
DM6100	DM6100 CI0.5	30002569		3902
DM6300	DM6300 CI1.0 RS	30002566		4707
DM6100	DM6100 CI1.0	30002567		3716

Please contact Customer Care Center for Stockable and Non stockable status of references.

✓ NORMAL STOCK ITEMS

W.E.F. July 15th, 2025

10. CE compliance - Volt/Amp/ frequency meter



10.1 EasyLogic™ DM3000 / DM1000

Digital panel meters for measurement of Volt / Amps / Frequency electrical parameters.

- > Accuracy 0.5 % on full scale for Volt & Amps and 0.2 % for Frequency.
- > CE certification as per IEC 61010-1 Edition 3.
- > Easy to operate: Intuitive navigation with single button for self-guided menus.
- > EMI/EMC tests as per IEC 61326-1.
- > Control power options: Universal range 44 to 275 V L-N AC/DC.
- > Panel key: Single key for programming, navigation or as selector switch.
- > Green premium Ecolabel product.

Product	Description	Reference		Unit MRP [₹]
DM3210	Three phase Voltmeter CI0.5	30002965		3762
DM3110	Three phase Ammeter CI0.5	30002964		3762
DM1210	Single phase Voltmeter CI0.5	30002962		2553
DM1110	Single phase Ammeter CI0.5	30002961		2553
DM1310	Frequency meter CI0.2	30002963		1944

11. Just the Basics - Voltage / Ampere / Frequency Meters



11.1 Just the Basics - Voltage / Ampere / Frequency Meters

Digital panel meters which can be used in industrial and commercial settings for measurement of Volt / Amps / Frequency electrical parameters

- > Accuracy 0.5 % on full scale for Volt & Amps and 0.2 % for Frequency.
- > Easy to operate: Intuitive navigation with single button for self-guided menus.
- > Panel key: Single key for programming, navigation or as selector switch.
- > LED display: 7 segment numeric LEDs of height ~14.2 mm (0.55 in) with 4 digits display in one row with kilo value indicator.
- > Bright LED indicators - Kilo & Phase indications for measured value.
- > Compact meter with 43.5 mm depth behind the panel.

Product	Description	Reference		Unit MRP [₹]
DM3210	Three phase Voltmeter CI0.5	30002462	✓	3065
DM3110	Three phase Ammeter CI0.5	30002461	✓	3065
DM3210	Three phase Voltmeter CI1.0	30002386	✓	2451
DM3110	Three phase Ammeter CI1.0	30002385	✓	2451
DM1210	Single phase Voltmeter CI0.5	30002460	✓	2076
DM1110	Single phase Ammeter CI0.5	30002459	✓	2076
DM1210	Single phase Voltmeter CI1.0	30002366	✓	1541
DM1110	Single phase Ammeter CI1.0	30002365	✓	1541
DM1310	Single phase Frequency CI0.2	30002367	✓	1541

* Conzerv is now EasyLogic™

Please contact Customer Care Center for Stockable and Non stockable status of references.

✓ NORMAL STOCK ITEMS

W.E.F. July 15th, 2025



Purpose-built to keep your power reliable and efficient

EcoStruxure™ Power Monitoring Expert

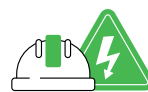
Power is critical to your operations. Disruptions impact productivity and safety. Wasted energy and equipment failures affect your bottom line. Grid systems are also becoming more dynamic and regulations more challenging. You need a way to reveal hidden risk and new opportunities.

Award-winning EcoStruxure™ Power Monitoring Expert (PME) simplifies management of complex power systems. It brings unique new capabilities that protect people and assets, keeps operations running and saves time and money. As a key element in an EcoStruxure Power solution, PME takes full advantage of IoT connectivity and distributed intelligence to help maximize your uptime and operational efficiency:

- Smart events and alarm clustering for intuitive filtering, searching and categorization of events and alarms
- Graphical timelines easily analyze event and alarm sequence, location and potential impact
- Advanced energy visualization – analysis tools calculate, model, forecast and track energy performance indicators (EnPIs)
- Compliant with IEC62443 cybersecurity standards, for even the most demanding IT environments



EcoStruxure Power Monitoring Expert drives performance with the next generation in power and energy management.



Help keep people and assets safer



Optimize business reliability and continuity



Maximize operational lifecycle efficiency



Simplify compliance



The power of a SCADA uniquely designed for critical power management

EcoStruxure™ Power Operation

No matter the size or complexity of your electrical system, you need reliable power 24/7. Every second of downtime in a power-critical facility means business interruption and financial loss, unsafe conditions and damaged reputations. Your team requires the ability to react and correct issues immediately for every potential risk.

EcoStruxure Power Operation is a SCADA system uniquely designed to help large electrical distribution applications in facilities like data centers, industrials, airports and electro-intensive operations maximize uptime, unite medium and low voltage networks and integrate mechanical monitoring.

Power availability

Reduce downtime caused by electrical outages for optimum continuity and reliability. Using machine-learning algorithms and automation, Power Operation improves situational awareness to speed analysis and reduces the time required for your operators and engineers to discover root causes.

Energy efficiency

Power Operation helps you set energy targets, track consumption and monitor performance. Create overall efficiencies to avoid peak penalties, identify bill errors and allocate energy costs. Real-time management and KPI reporting improve your operational efficiency.

Cybersecurity

Stay connected while protecting people, electrical assets and valuable, sensitive information. Power Operation's third-party cybersecurity certifications provide peace of mind to give you operational confidence and helping you avoid malicious threats and safety hazards.



SCADA system for real-time situational awareness and cyber-resilient solutions



Maximize power reliability and uptime



Boost operational efficiency



Improve confidence in operations and security

Note

[illegible]

[illegible]

Life Is 

Schneider
Electric

Schneider Electric India Pvt. Ltd.

Corporate Office: 9th Floor, DLF Building No. 10, Tower C, DLF Cyber City, Phase II, Gurugram - 122002, Haryana
Tel: 0124 3940400, www.se.com/in

Ahmedabad

Schneider Electric India (P) Ltd.
1506-1507, 15th Floor Shapth-5
Opp.Karnavati Club, SG Highway,
Ahmedabad, Gujarat - 380015
Tel.: 079-66826701

Coimbatore

Schneider Electric India Pvt. Ltd.
Mikro Grafeio Services Pvt Ltd.,
Elysium Tower, #21, A.T.T
Colony, Near Honda Office,
Coimbatore, Tamil Nadu - 641018

Lucknow

Schneider Electric India (P) Ltd.
Summit, Plot No. TCG 3/3
6th Floor, 604A/B/C, Vibhuti Khand
Gomti Nagar, Lucknow
Uttar Pradesh - 226010
Tel.: 0522-3500334

Nashik

Schneider Electric India (P) Ltd.
401, 4th Floor, Rishi Raj Towers
Jehan Circle, Gangapur Road
Nashik - 422013
Tel.: 0253-2344333

Bengaluru

Schneider Electric India (P) Ltd.
No. 3/1, JP Techno Park
Mezzanine Floor, Millers Tank Bund
Road, Vasanth Nagar
Bengaluru - 560052
Tel.: 080-71481351

Hyderabad

Schneider Electric Pvt. Ltd.
4B-4th Floor, Gumidelli Towers,
Prakash Nagar, Begumpet,
Hyderabad - 500016

Ludhiana

Schneider Electric India (P) Ltd.
SCO 23, 2nd Floor,
Chandigarh Road, Sector 32
Ludhiana, Punjab -141010
Tel.: 0161- 5203011

New Delhi

Schneider Electric India (P) Ltd.
C-56, Mayapuri Industrial Area, Phase-2
New Delhi - 110064
Tel.: 011-61317400

Bhubaneswar

Schneider Electric India (P) Ltd.
Workloop Co-Working in the property
Office No. 316, Esplanade One Mall
Rasulgarh, Bhubaneswar - 751010

Indore

Schneider Electric India (P) Ltd.
219, Dhan Trident Building
Vijay Nagar, A.B.Road
Indore - 452001

Mohali

Schneider Electric India (P) Ltd.
2nd Floor, Tower-A
Bestech Business Tower
Mega Information & Technology Park
Industrial Plot No.1, Phase IX
(Expansion), Mohali - 160059
Tel.: 0172-7198200

Pune

Schneider Electric India (P) Ltd.
Amar Caliber, CTS No 911, BMCC Road,
OFF F.C. Road, Deccan Gymkhana,
Shivaji Nagar, Pune - 411007
Tel.: 020-67492500

Chennai

Schneider Electric India (P) Ltd.
No: 29, 2nd Floor,
Bannari Amman Towers, B-Block
Dr. Radhakrishnan Road, Mylapore
Chennai - 600 004
Tel.:044-71912000

Jaipur

Schneider Electric India (P) Ltd.
Jaipur Business Centre 309
3rd Floor, Sangam Tower 190
Church Road, Jaipur - 302001
Tel.: 0141-2374810

Mumbai

Schneider Electric Pvt. Ltd.
L&T Business Park, Tower B,
7th Floor, TC-II, Gate No.5,
Saki Vihar Road, Powai,
Mumbai - 400072

Vadodara

Schneider Electric India (P) Ltd.
Notus IT Park, 10th Floor, Block-D
Sarabhai Campus, Vadiwadi
Vadodara, Gujarat - 390017

Cochin

Schneider Electric India (P) Ltd.
Alapatt Properties Private Limited
(Trade Name: Centre A)
Main Door Number: 66/4971
(Old Door Number: 40/6584-H)
7th Floor Alapatt Heritage Building
MG Road Kochi - 682035

Kolkata

Schneider Electric (I) Pvt. Ltd.
BN3, Salt Lake, Sector V,
Kolkata - 700091

Nagpur

Schneider Electric India (P) Ltd.
6, Vasant Vihar Complex
W.H.C Road, Shankar Nagar
Nagpur - 440010
Tel.: 0712-2558581

Vishakhapatnam

Schneider Electric India (P) Ltd.
D.N.10-1-43, 1st Floor
Ratnam's Business Centre,
Siripuram Fort, C.B.M.Compound
Visakhapatnam - 530016
Tel.: 0891-6675500

Customer Care Centre

Monday-Saturday, 9 a.m. to 8 p.m.

Toll-free numbers: 1800 419 4272, 1800 103 0011

Email: customercare.in@schneider-electric.com

For more information, visit our website at: www.se.com/in

- All Prices are in Indian Rupees.
- Prices are subject to change without prior notice.
- Product evolution is a continuous process and Schneider Electric reserves the right to modify/withdraw any product at any time without prior notice.
- Prices charged will be as prevailing on the date of dispatch.
- Invoice Amount = (MRP – less Applicable discount) + Applicable GST %
- Tax incidence on invoices is basis applicable GST rates.
- Invoice amount not to exceed MRP.
- Product pictures shown are for illustration purpose only, actual product may vary.

Distributor

Authorised Dealer & Stockist: MAKCON INDUSTRIES

EMAIL : contact@makconindustries.com

MOB: 7703033555